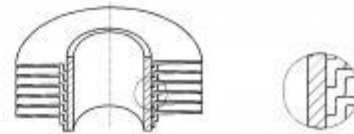
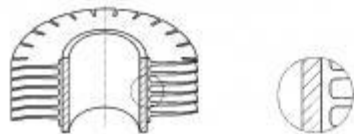


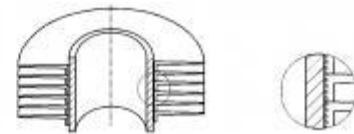
"EXTRUDED" type - with cold rolled extruded fins.



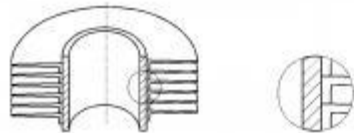
"LL" type - with overlapped metal strip wounded on the core tube.



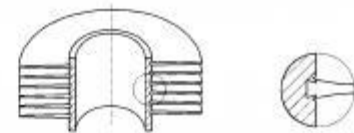
"EXTRUDED SERRATED" type - with cold rolled extruded fins with longitudinal notches and inclined fin tips.



"KL" type - with metal strip wounded on the core tube with knurled surface.



„L" type - with metal strip wounded on the core tube.



"G" type - with metal strip embedded in the core tube groove.